

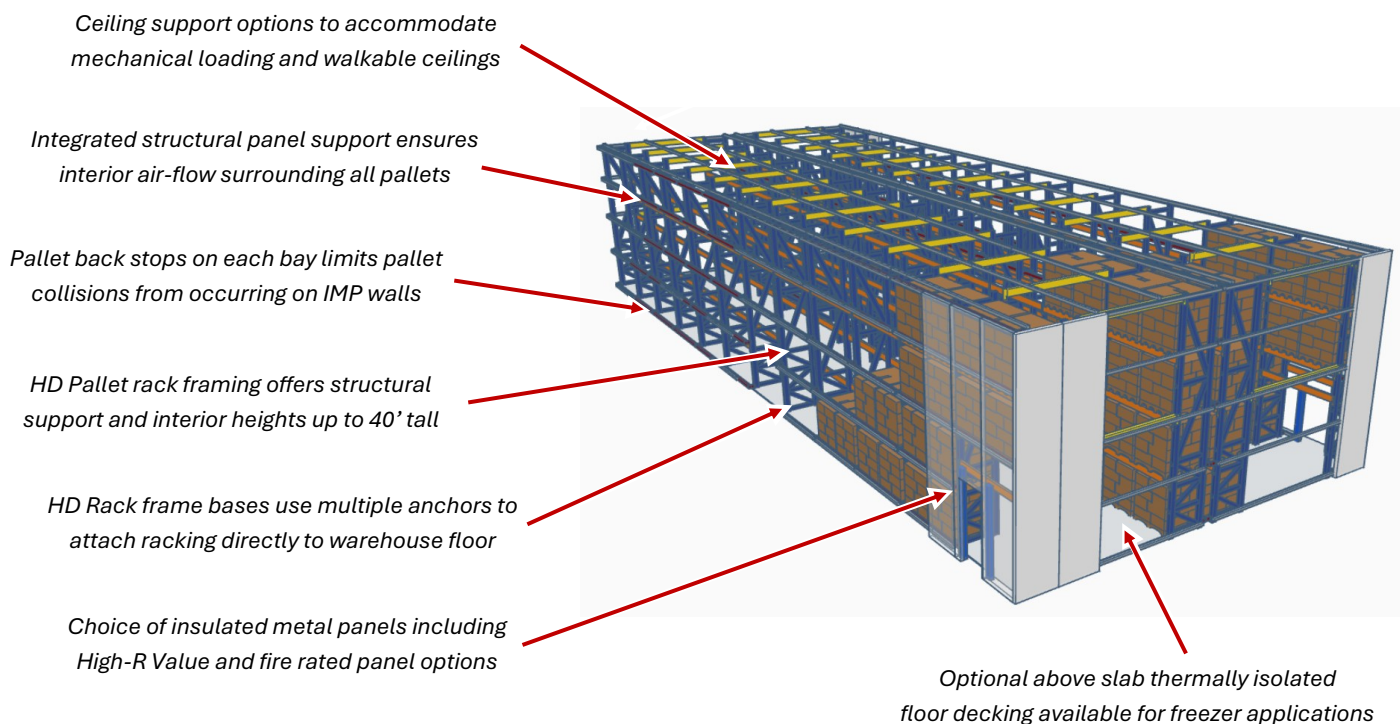


RSS-3650 RACK SUPPORTED COLD STORAGE COOLER

Box in a Box Turn-key Building Solution for Controlled Environment Applications

The **X^o Structure** shown below is designed for use as a palletized cold storage finished goods building. This free-standing forklift accessible structure is designed for client specific storage requirements. We use a structural engineered modular framing system, that offers scalable floor plan configurations and rapid installations. All **X^o Structures** are available with an optional, above slab, insulated floor system for freezer applications.

- Consider the unique design features that **X^o Structure** offers with every rack supported structure we design...

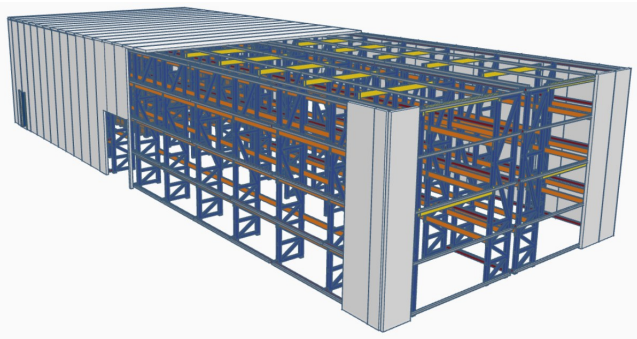


- * All structures are validated for structural integrity by our licensed structural engineering partners.
- * Modular structures offer labor, cost and time savings over traditional cam-lock coolers and clean rooms
- * All materials used are tested and certified by our respective component manufacturing partners
- * Complete "RTA" ready to assemble systems are delivered on site ready to build in weeks not months
- * In-house 3D modeling and stamped engineering drawings included with every project
- * Certified installation available from our nationwide network of installers

RSS -3,650 SF - RACK SUPPORTED COOLER

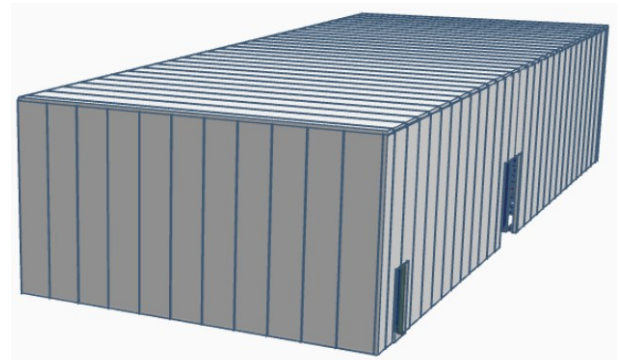
PRODUCT INFORMATION

Founded on customer demand for modular controlled environment structures, Xō Structure designs & develops ready to assemble “RTA” turn-key structures, commonly used for drive-in coolers, freezers, food processing, clean rooms and urban agriculture growing environments. Xō Structure’s are engineered as free-standing self supporting box in a box buildings that eliminate the need for transferring any structural load to the warehouse buildings in which they are installed. Xō Structure’s are available in all fifty states and are designed and engineered to meet regional building codes for interior and exterior applications. Check out the design elements in this 3,650 Square Foot rack supported cooler...



RACKING LAYOUT & PALLET CAPACITY:

- Aisle Width - 11'-0"
 - Number of Aisles - Two (2)
 - Number of Racking Rows - 4
 - Number of Pallet Levels Per Row - 4
 - Number of Racking Bays:
- Row 1 = 10 Bays @ (8) Pallet Positions (80)
2 Bays @ (4) Pallet Positions (8)
- Row 2 = 11 Bays (8) Pallet Positions (88)
1 Bays @ (4) Pallet Positions (4)
- Row 3 = 11 Bays (8) Pallet Positions (88)
1 Bays @ (4) Pallet Positions (4)
- Row 4 = 10 Bays @ (8) Pallet Positions (80)
2 Bays @ (4) Pallet Positions (8)
- **Total - Number of Pallet Positions - 360**



EXTERIOR STRUCTURE SPECIFICATIONS:

- Structure Foot Print - 3,650 Sq. Ft.
- Overall Size - 36'-6" W X 100' L X 20' H
- HD Selective Racking System
- Stamped Engineering Drawings Provided
- Seismic Rated Approvals Available
- Insulated Wall and Ceiling Metal Panel Options Available (Including Fire-rated Panels)
- Options Available for Insulated and Roll-up Doors
- Purpose Built Application
 - Designed as a 36°F Cold Storage Building Installed on top of an Existing Warehouse Floor
 - Available as a Freezer Building Complete w/ integrated Above Ground Insulated Floor System

Interested in an Xō Structure?

Call or visit us online @ www.xostructure.com

Or scan the QR code for more information



Xō STRUCTURE

(702) 301-8897 • info@xostructure.com • 6404 Abilene St., Centennial CO 80111

